

Pool Villa Near Mabprachan Lake - 4 Bedrooms 4 Bathrooms

Pattaya, Mabprachan Lake, Thailand
Reference: 8036

฿8,990,000



4 Bedrooms

4 Bathrooms

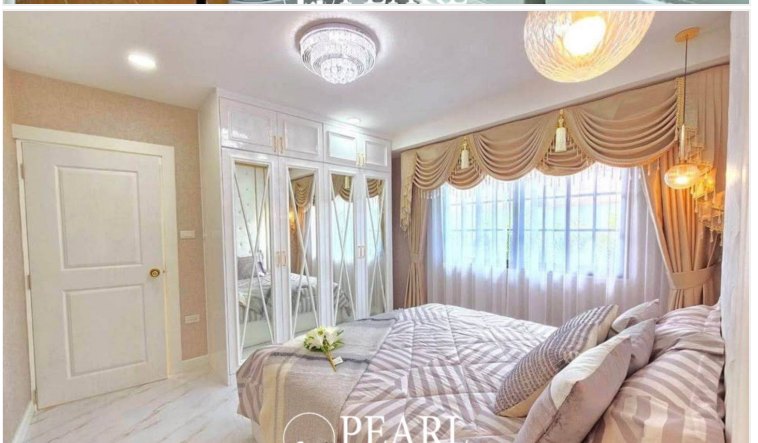
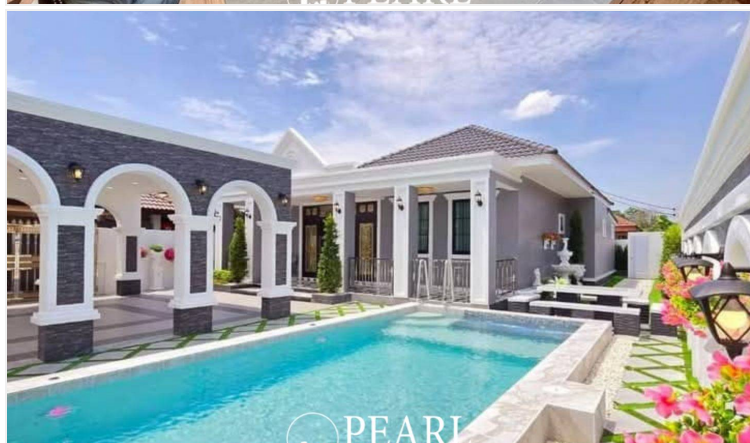
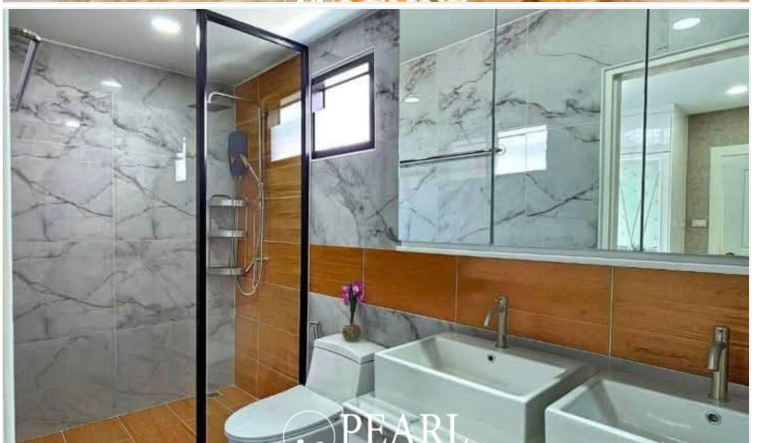
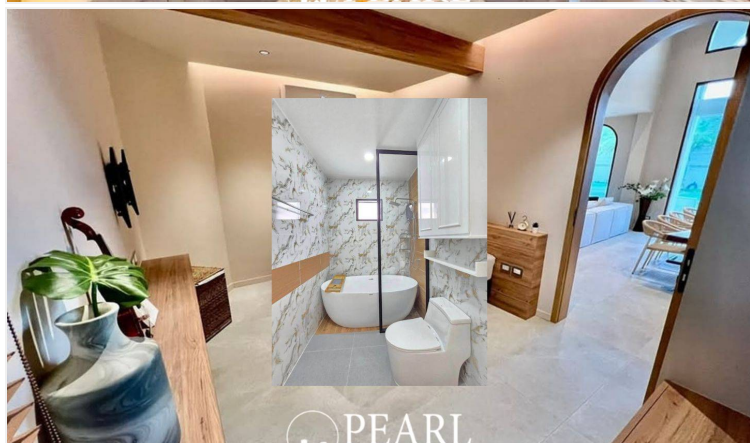
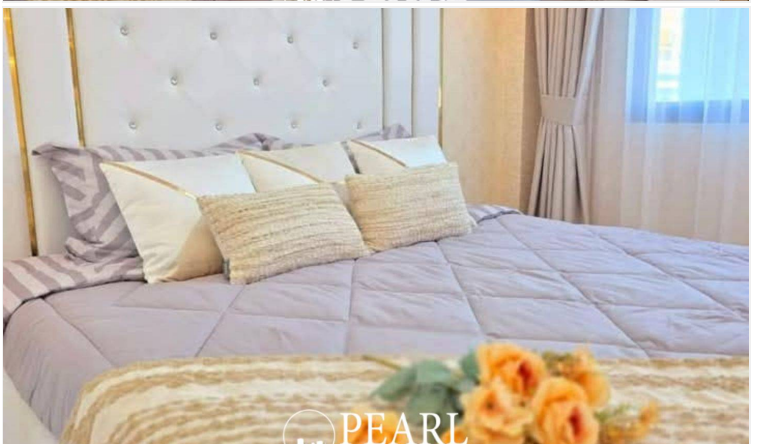
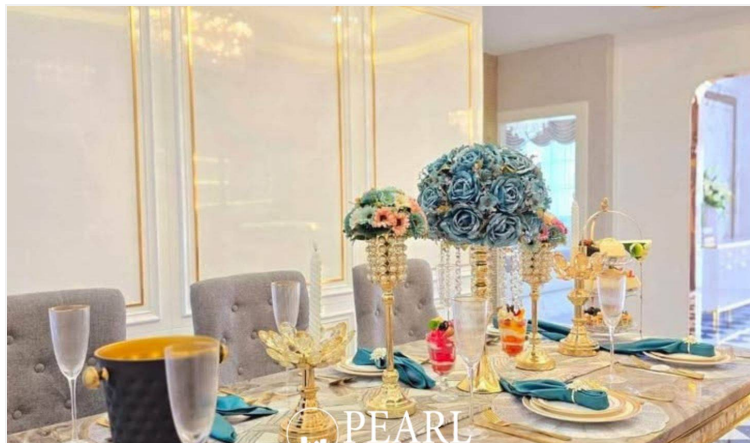
Villa

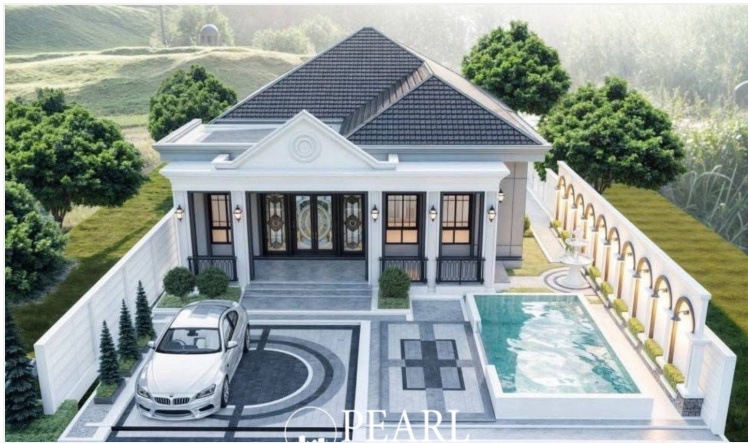
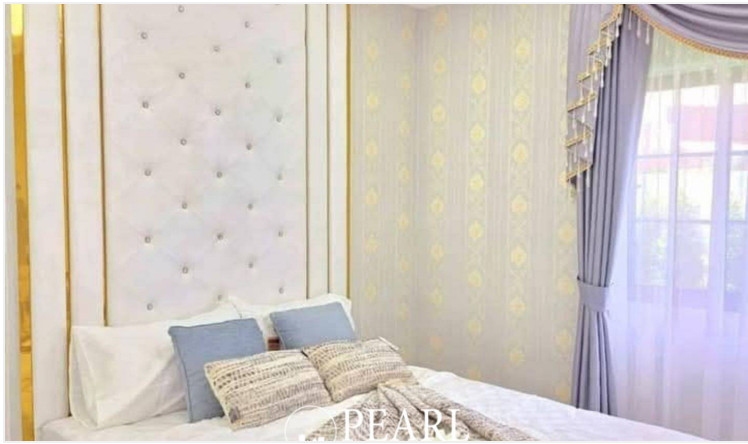
Property Description

This stunning home is located in the peaceful area of East Pattaya, just moments from Mabprachan Lake, Siam Country Golf Course, international schools, shopping malls, and restaurants. It offers easy access to Highway 36 leading to Rayong and Pattaya, as well as Motorway 7, which connects to Bangkok and Suvarnabhumi Airport. The house boasts 4 spacious bedrooms and 4 modern bathrooms, with a generous 275 sqm of living space, set on a 364 sqm plot. Fully furnished with high-quality decor, it includes a private swimming pool, a beautifully landscaped garden, and dedicated private parking, making it a perfect family home or luxury retreat.

Photo Gallery







Property Details

- **Property Type:** Villa
- **Location:** Pattaya, Mabprachan Lake, Thailand
- **Internal Area:** 274m²
- **Land Area:** 364m²
- **Price:** ~~฿8,990,000~~
- **Bedrooms:** 4
- **Bathrooms:** 4

Location



image not found or type unknown