

Baan Plai Haad Condo - 2Bed 2Bath

Pattaya, Bang Lamung, Thailand
Reference: 975

฿9,500,000



2 Bedrooms



2 Bathrooms



Condo

Property Description

Pearl Property presents a stunning **2-bedroom beachfront condo** at the highly sought-after **Baan Plai Haad Wongamat**, located in one of Pattaya’s most exclusive neighborhoods. This beautiful unit on the **9th floor** offers breathtaking **sea views and direct views of the Sanctuary of Truth**, combining luxury living with unbeatable scenery.

Spanning **73 sq.m.**, the condo features **2 bedrooms and 2 bathrooms**, and comes **fully furnished**—ready to move in or rent out as a high-demand investment property.

Unit Details:

- 73 sq.m. | 9th Floor
- 2 bedrooms | 2 bathrooms
- Sea view & Sanctuary of Truth view
- Fully furnished: sofa, refrigerator, washing machine

Facilities at Baan Plai Haad:

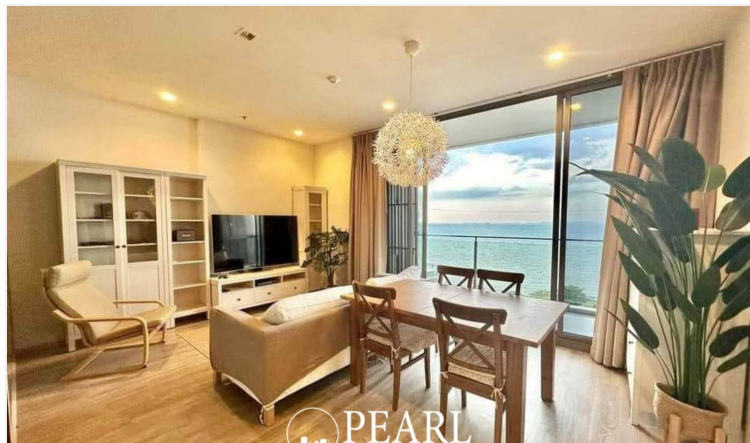
- Large **swimming pool**
- Fully equipped **gym**
- 24-hour security
- Keycard access and private parking

Located in the **prestigious Wongamat - Naklua area**, this condo is just minutes from beachfront restaurants, trendy cafes, and central Pattaya.

Price: 9,500,000 THB — Rare sea-view unit in a prime location!

Contact us today to schedule a private viewing or request more information

Photo Gallery



Property Details

- **Property Type:** Condo
- **Location:** Pattaya, Bang Lamung, Thailand
- **Internal Area:** 73m²
- **Price:** ฿9,500,000
- **Bedrooms:** 2
- **Bathrooms:** 2

Property Features

- Security
- Gym
- Jacuzzi
- Sauna
- Swimming Pool
- Air Conditioning
- Balcony
- Car Park
- Electricity
- Integral Kitchen
- Internet
- Alarm
- Children's Area
- Concierge
- Guardhouse
- Lift
- Roof Garden
- Equipped Kitchen
- Disabled Access
- Library

Location

image not found or type unknown

