

Cascade - Type Forrest 4 Bedrooms 6 Bathrooms

Pattaya City, Toong Klom Tan Man, Thailand
Reference: 5187

฿19,200,000



5 Bedrooms



6 Bathrooms



Villa

Property Description

Cascade by Patta: A Tranquil Retreat Near Pattaya Beach

Cascade by Patta offers a perfect blend of peace, luxury, and modern living, ideal for both holiday homes and permanent residences. Located near Pattaya and Jomtien beaches, this residential development combines stunning natural surroundings with easy access to city life. With prices starting from 17.7 million THB, it presents an exceptional opportunity for those seeking a serene, well-connected lifestyle.

Prime Location Near Pattaya Beach

Situated in the peaceful Soi Thungklom-Tanman area, just 9 km from Central Festival Pattaya, Cascade by Patta offers a tranquil escape while being close to vibrant city amenities. It's also conveniently located near international schools, golf courses, and equestrian facilities, making it perfect for families and those seeking balance.

Exceptional Architectural Design

Designed by renowned firms like TECTONIX, makeAscene, and Dong Sculpture, Cascade by Patta features a sophisticated Modern Contemporary style. The development boasts elegant architecture and landscaping that create a calming atmosphere, with all utility lines buried underground for a clean, sleek environment.

Luxurious Amenities

The project offers a range of top-tier amenities, including a spacious Clubhouse, expansive garden areas, and a Half Olympic-sized swimming pool (25 meters). These facilities create a resort-like atmosphere, perfect for relaxation.

Home Options for Every Lifestyle

Choose from a variety of luxurious homes tailored to different needs:

ARBOR – 2-Story Detached House

Land: 112.8 sq.w., Usable Area: 400 sq.m.
4 Bedrooms, 5 Bathrooms, 3 Parking Spaces
Starting from 17.7 million THB

FOREST – 2-Story Detached House

Land: 116.4 sq.w., Usable Area: 402 sq.m.
4 Bedrooms, 6 Bathrooms, 3 Parking Spaces, 1 Maid's Room
Starting from 19.2 million THB

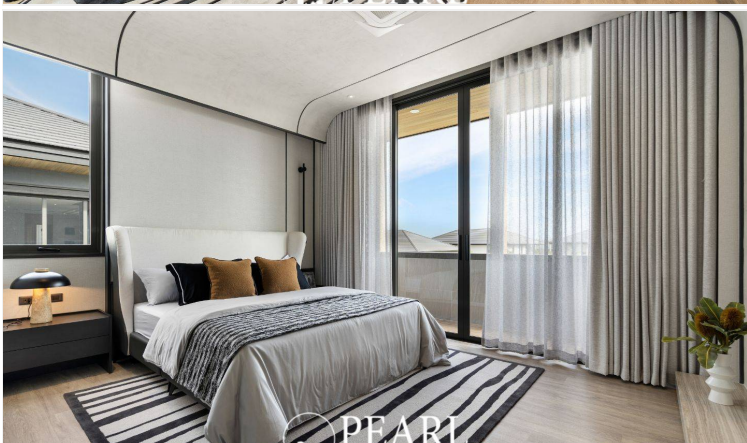
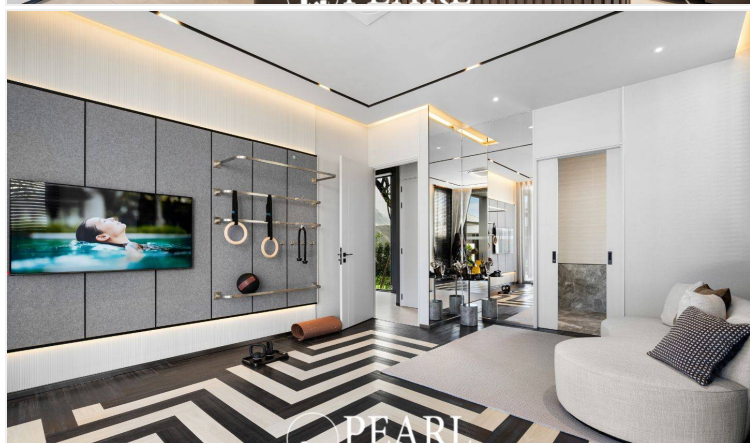
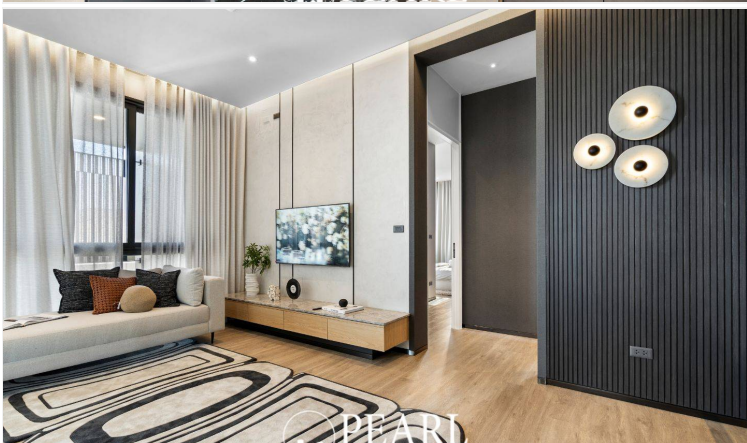
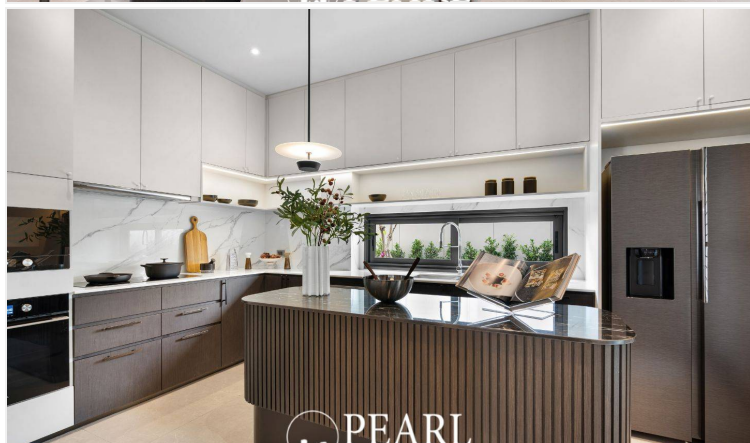
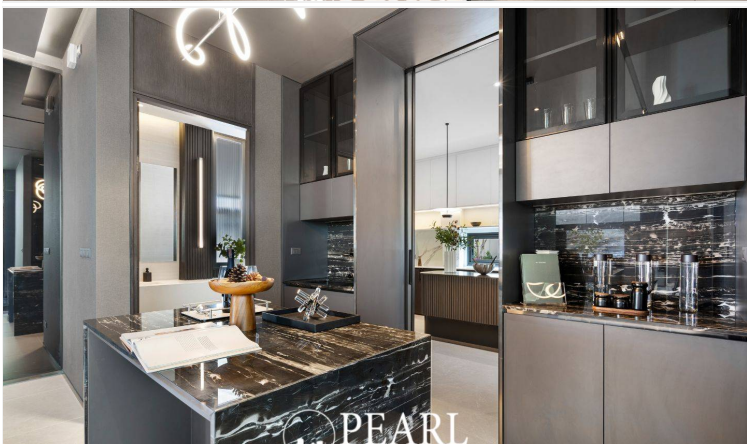
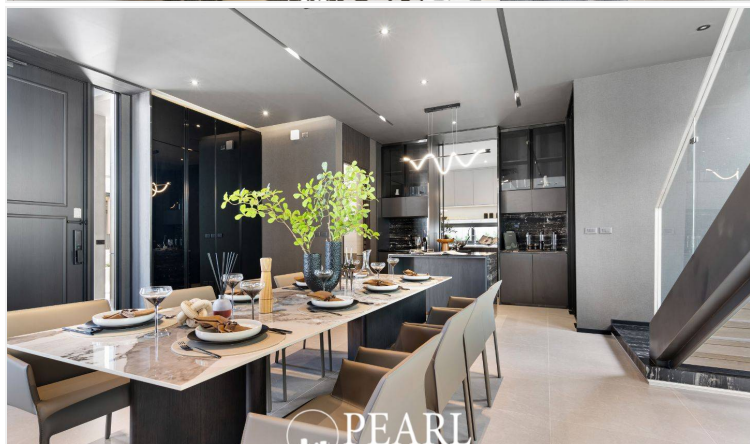
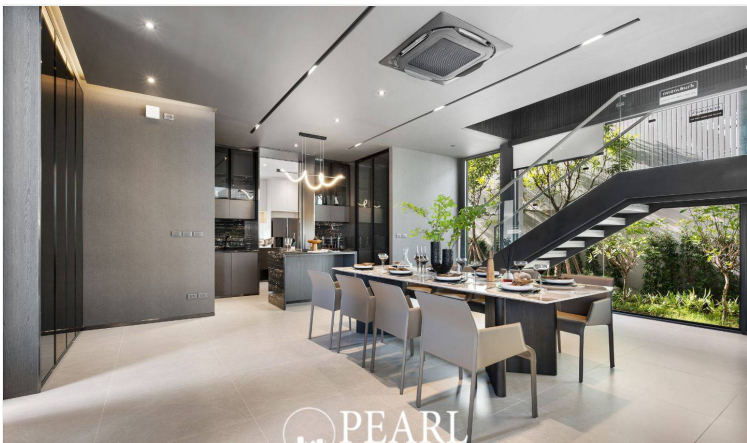
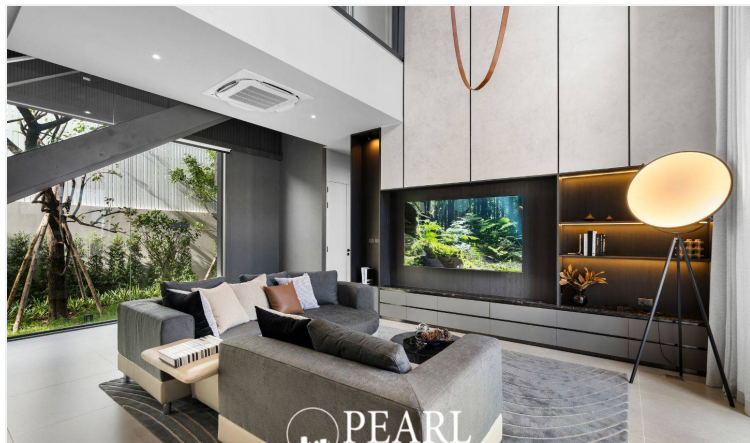
WOODLAND - 1-Story Detached House
Land: 179.8 sq.w., Usable Area: 559 sq.m.
4 Bedrooms, 5 Bathrooms, 3 Parking Spaces, Private Pool
Starting from 24.5 million THB

Spacious Land and Optional Pools
With plots ranging from 112.8 sq.w. to 179.8 sq.w., homes are positioned to maximize front garden space. Some homes come with private swimming pools, while others offer pool-free options for lower maintenance.

Whether you're seeking a peaceful retreat or a permanent home, Cascade by Patta offers luxurious residences with modern amenities and a prime location.

Photo Gallery





Property Details

- **Property Type:** Villa
- **Location:** Pattaya City, Toong Klom Tan Man, Thailand
- **Internal Area:** 402m²
- **Land Area:** 466m²
- **Price:** ฿19,200,000
- **Bedrooms:** 5
- **Bathrooms:** 6

Property Features

- Security
- Gym
- Swimming Pool
- Car Park
- Children's Area

Location



image not found or type unknown