

Lalin Villa - 4 Bed 3 Bath

Muang Pattaya, Thailand
Reference: 5062

฿6,390,000



4 Bedrooms



3 Bathrooms



Villa

Property Description

Pearl Property presents

Lalin Villa - Luxurious Detached Homes Near Pattaya

Discover the perfect blend of modern design and spacious living at **Lalin Villa**. These exclusive two-story homes offer generous space and a prime location near international schools and essential amenities, just minutes from the heart of Pattaya.

Available House Types

Two-Story Detached Homes

3 Bedrooms, 2 Bathrooms

Starting at 4.69 million THB (Unfurnished) - 2 units available

5.89 million THB (Unfurnished) - 1 unit available

Land area: 200 sq.m. | Usable area: 156 sq.m.

4 Bedrooms, 3 Bathrooms

6.39 million THB (Fully Furnished) - 1 unit available

Land area: 230-293 sq.m. | Usable area: 156-170 sq.m.

Delivered as an unfurnished unit, allowing you to design your dream home.

Project Highlights

- Prime Location** - Close to international schools, shopping malls, and local markets.
- Luxury & Space** - Perfect for families looking for a spacious and modern home.
- Privacy & Tranquility** - Conveniently close to the city while maintaining a peaceful atmosphere.
- Great for Living or Investment** - Ideal for long-term residence or rental opportunities.

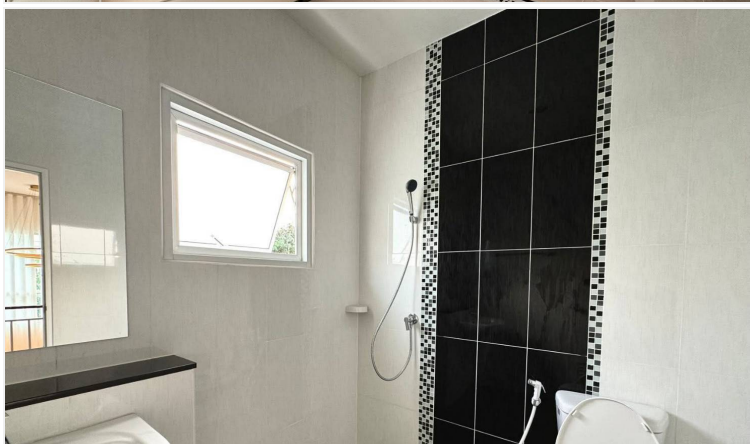
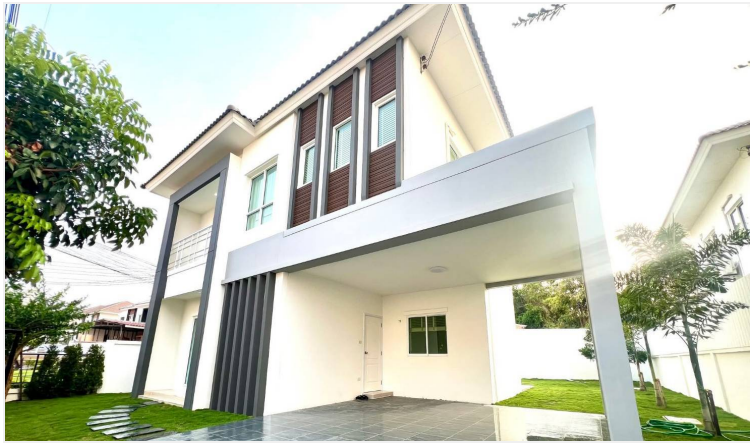
Nearby Amenities

- 7-11 - **200 meters**
- Phoenix International School - **10 meters**
- Tara International School - **1 km**
- Lotus Supermarket - **1 km**
- Big C / Makro - **3.6 - 4 km**
- Central Festival Pattaya & Terminal 21 - **5 - 5.5 km**

Secure your dream home with a **200,000 THB** booking fee today!

Photo Gallery







Property Details

- **Property Type:** Villa
- **Location:** Muang Pattaya, Thailand
- **Internal Area:** 170m²
- **Land Area:** 293m²
- **Price:** ~~฿6,390,000~~
- **Bedrooms:** 4
- **Bathrooms:** 3

Property Features

- Security
- Air Conditioning
- Electricity
- Integral Kitchen
- Guardhouse

Location



image not found or type unknown