

Prime Meridian Beach House Pool Villa 4 Bed-5 Bath

Pattaya, Na Jomtien, Thailand
Reference: 4230

฿39,000,000



4 Bedrooms

5 Bathrooms

Villa

Property Description

Pearl Property presents an exquisite luxury pool villa in the prestigious Movenpick Pool Villa (V7), Na Jomtien, Sattahip. Just 300 meters from the beach, this fully renovated 4-bedroom, 5-bathroom residence (with 3 bathtubs) offers the ultimate in seaside living.

Property Highlights

- Spacious & Elegant 130 sq. wah (520 sqm) land area, with 500 sqm of living space, thoughtfully designed by Sari Smith Interior, a renowned Thai designer.
- Turnkey Investment A proven income-generating asset, currently listed on Agoda, earning an average of THB 300,000 – 350,000 per month from short-term rentals.
- Celebrity-Endorsed Favored by high-profile guests, including actors, singers, and influencers, making it a prime choice for business or personal use.

Prime Location & Growth Potential

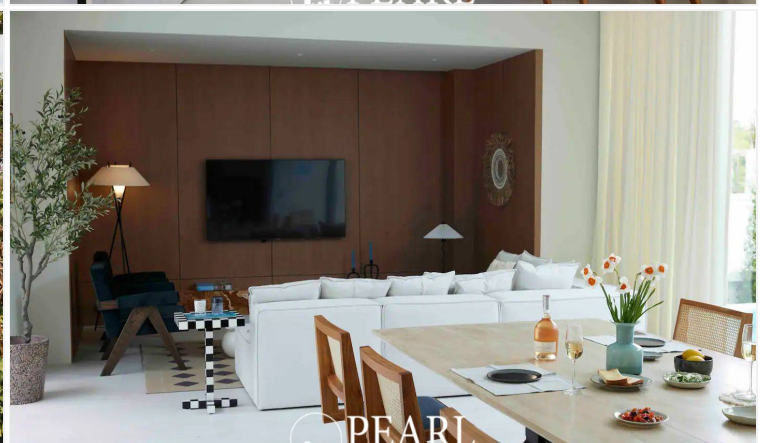
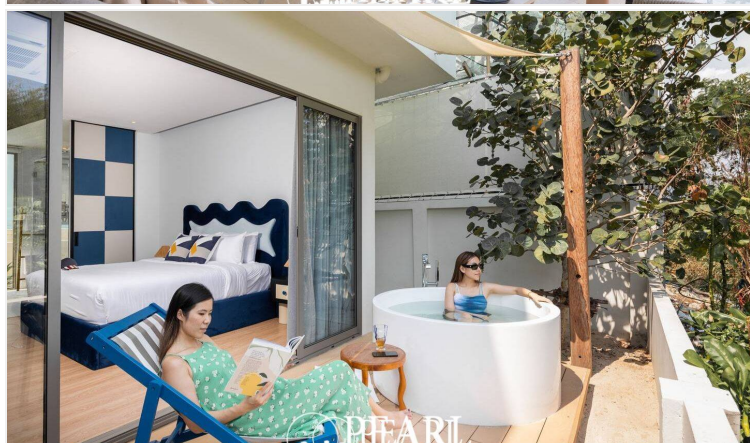
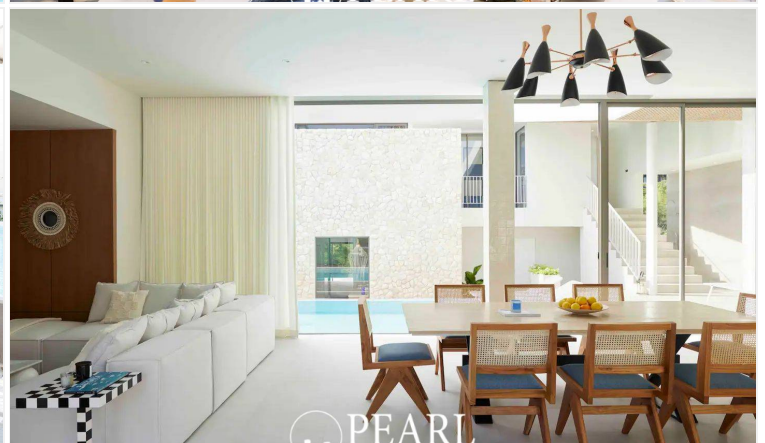
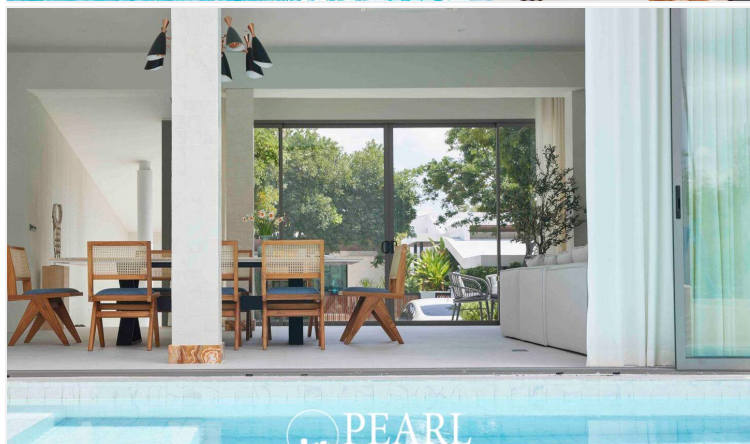
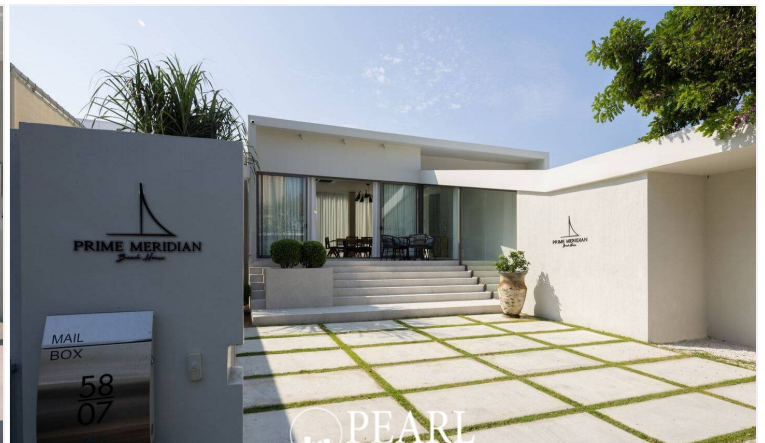
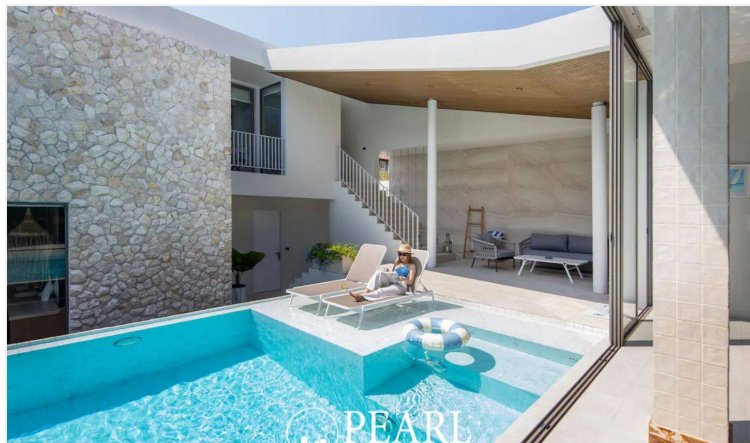
- Situated next to Ocean Marina Yacht Club and the upcoming ICONSIAM Pattaya, a multi-billion-baht development set to transform the area into Pattaya’s new commercial hub.
- Easy Accessibility: Close to the new motorway exit and the future high-speed railway station, enhancing its value for capital appreciation.
- Located within Movenpick Na Jomtien, a successful project with a hotel occupancy rate exceeding 80%, ensuring strong rental demand.

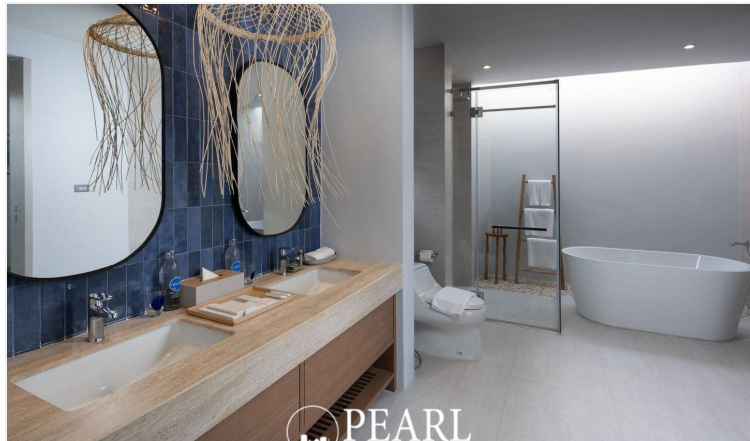
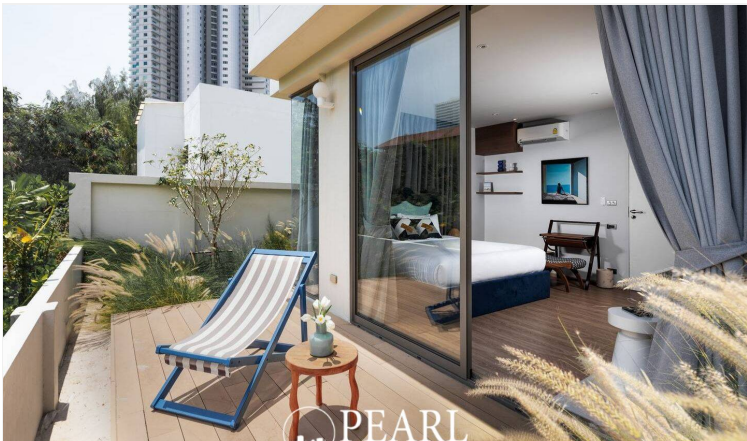
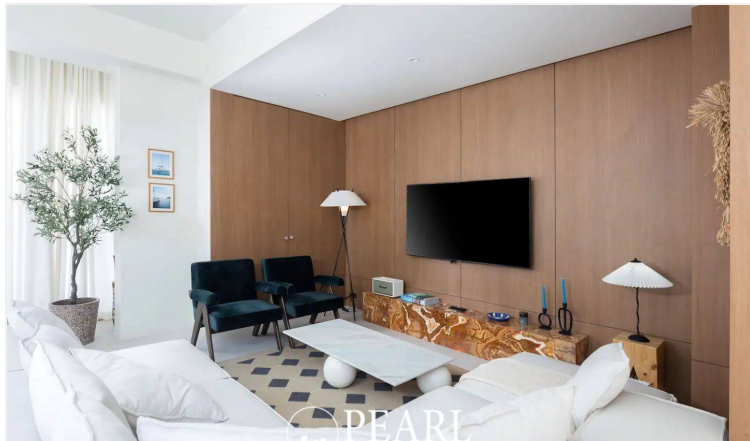
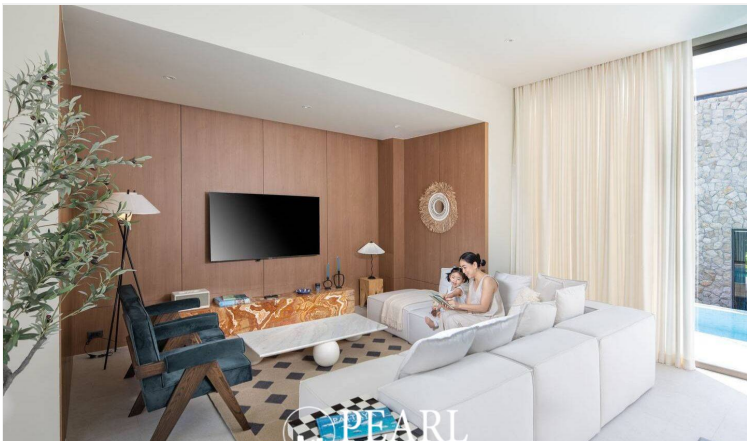
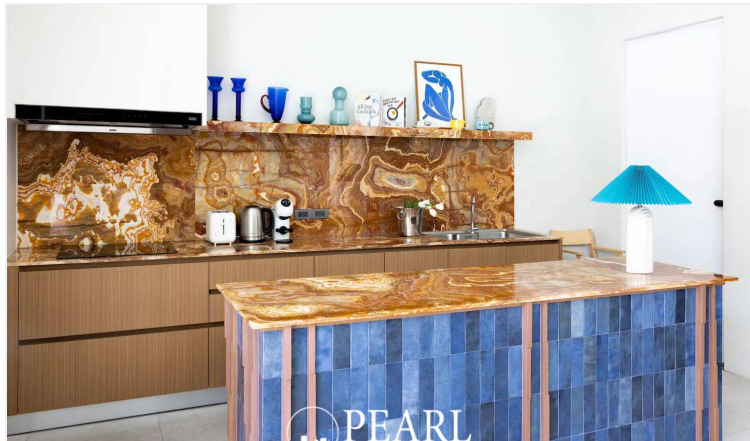
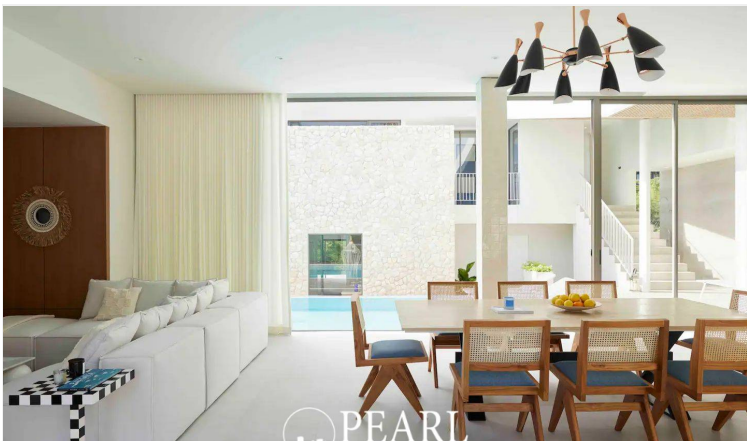
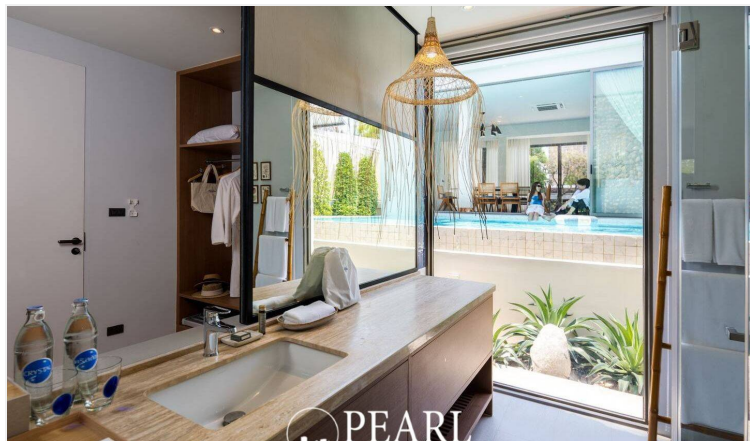
Exclusive Features

- Designer Interiors: World-class classic design, a standout within the project. Rated 9.3/10 on Agoda, among Pattaya’s highest-rated pool villas.
- Strong Rental Yield: A well-documented rental track record, delivering consistent high monthly returns.

This is a rare opportunity to own a highly sought-after luxury villa with outstanding investment potential. Contact us today to schedule a private viewing.

Photo Gallery





Property Details

- **Property Type:** Villa
- **Location:** Pattaya, Na Jomtien, Thailand
- **Internal Area:** 500m²
- **Land Area:** 520m²
- **Price:** ~~฿~~**39,000,000**
- **Bedrooms:** 4
- **Bathrooms:** 5

Property Features

- Security
- Gym
- Jacuzzi
- Swimming Pool
- Tennis Court
- Air Conditioning
- Balcony
- Car Park
- Electricity
- Integral Kitchen
- Internet
- Alarm
- Children's Area
- Concierge
- Guardhouse
- Lift
- Equipped Kitchen
- Disabled Access
- Library

Location

image not found or type unknown

