

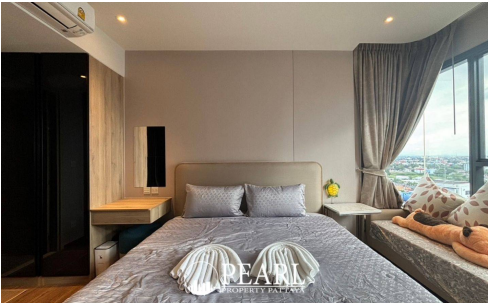
Once Pattaya - 1 Bedroom 1 Bathroom (10th Floor) With City View

Pattaya, North Pattaya, Thailand
Reference: 4410

฿5,990,000



1 Bedrooms



1 Bathrooms

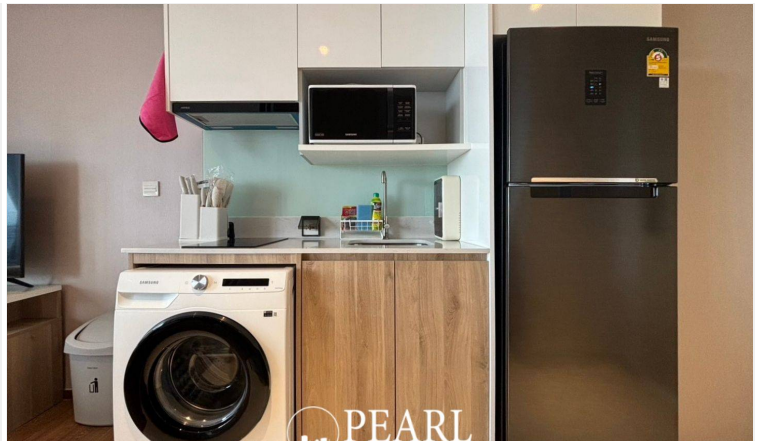
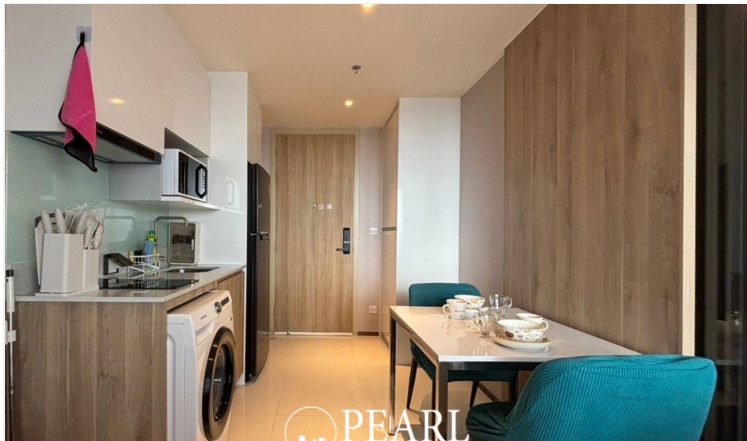
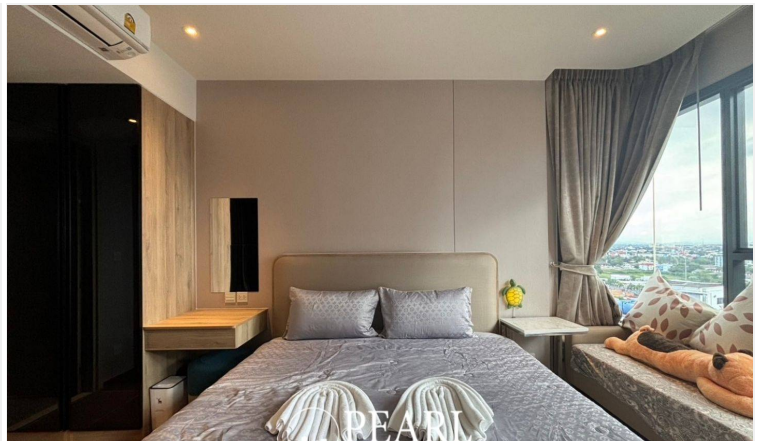


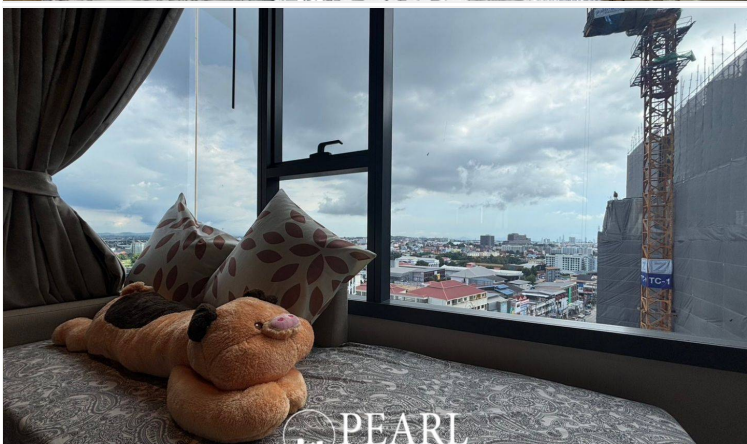
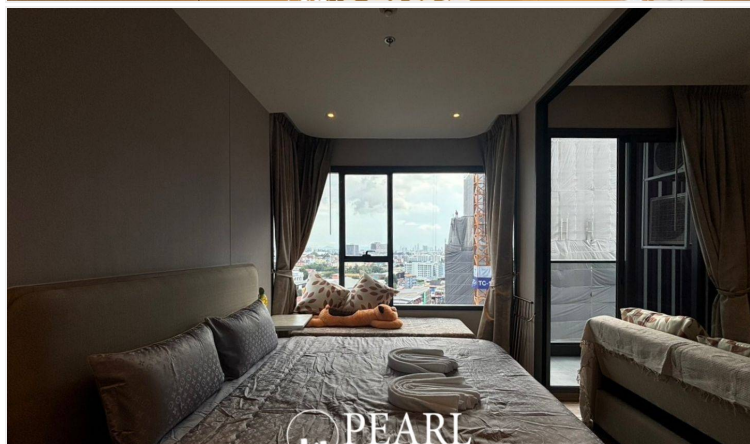
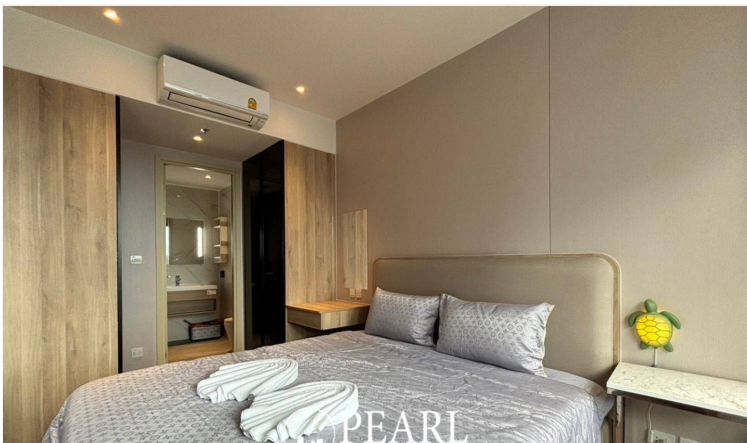
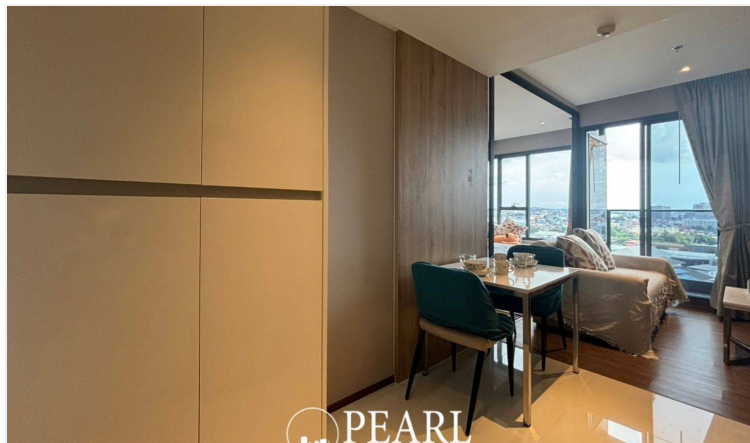
Condo

Property Description

Ready to move in! Once Pattaya is a mixed-use condominium project developed by Honour Group. It is a high-rise condominium that contains 427 units across 32 floors. The condominium is situated on 3rd road, North Pattaya, among numerous landmarks, beaches, and department stores such as Mini Siam Pattaya, Teddy Bear Museum, Walking Street, Bali Hai Pier, Phra Tm Nak Hill, Terminal 21, Central Marina, Central Festival Pattaya, Pattaya Beach, Wong Amat Beach. Facilities include sky bar, working space, serene and roof garden, sky gym, infinity-edge pool, kids playroom. This beautiful 1 bedroom and 1 bathroom unit is situated on the 10th floor offering 34 Sqm. of living space. It comes fully furnished with European kitchen, a dining area and living area.

Photo Gallery





Property Details

- **Property Type:** Condo
- **Location:** Pattaya, North Pattaya, Thailand
- **Internal Area:** 34m²
- **Land Area:** 34m²
- **Price:** ฿5,990,000
- **Bedrooms:** 1
- **Bathrooms:** 1

Property Features

- Security
- Gym
- Sauna
- Swimming Pool
- Air Conditioning
- Balcony
- Car Park
- Electricity
- Alarm
- Children's Area

Location

image not found or type unknown

