

# Once Wongamat

Pattaya, North Pattaya, Thailand  
Reference: 5898

฿6,175,000



1 Bedrooms



0 Bathrooms



Condo

# Property Description

---

## Once Wongamat: Where Elegance Meets the Sea

Welcome to Once Wongamat, an exclusive beachfront condominium that defines luxury living. Set in the tranquil yet vibrant area of North Pattaya, this stunning 56-storey development offers sophisticated residences with panoramic sea views, world-class amenities, and unmatched convenience.

## Prime Location

Ideally situated along Naklua Road and just a stone's throw away from Naklua Soi 33, Once Wongamat provides easy access to the best of Pattaya while offering a serene escape from the hustle and bustle. Whether you're looking to relax on the pristine beaches or explore local dining, shopping, and entertainment, this sought-after location is the ideal balance of peace and accessibility.

## Building Facts

- Land Area: 4-rai (6,400 sq.m.)
- Building: 56-storey tower with 548 luxury units
- Unit Types:
  - 1 Bedroom: 34.30 - 56.09 sq.m.
  - 2 Bedroom: 73.94 - 89.74 sq.m.
  - 3 Bedroom: 123.45 - 171.67 sq.m.
  - Penthouse: 358 - 448 sq.m.
- Parking: 233 car parking lots, 62 motorcycle lots (40%)
- (Parallel parking excluded)

## Exclusive Amenities

Every aspect of Once Wongamat has been designed with your comfort and lifestyle in mind, offering a range of luxurious facilities including:

- Private lounge and kitchen
  - Fully-equipped fitness center & studio
  - Two stunning swimming pools
  - Kids' play space
  - Onsen, spa, steam room, and sauna
  - Panoramic sky deck with breathtaking views
  - Dressing rooms for added convenience
  - Night theater for entertainment under the stars
  - Exceptional Dining and Leisure
- Indulge in a variety of world-class dining options that elevate your living experience:



- 1st Floor: Cozy café
- 2nd Floor: All-day dining and fine dining options
- 36th-37th Floors: Pool bar with panoramic views
- 50th-51st Floors: Ocean Sky Café for a truly elevated dining experience
- 56th Floor: Voyage Bar for sunset cocktails and chic evenings
- Additional Details

Sinking Fund: 700 baht/sq.m. (one-time payment)  
Maintenance Fee: 80 baht/sq.m./month (payable annually)  
Unrivalled Views & Privacy

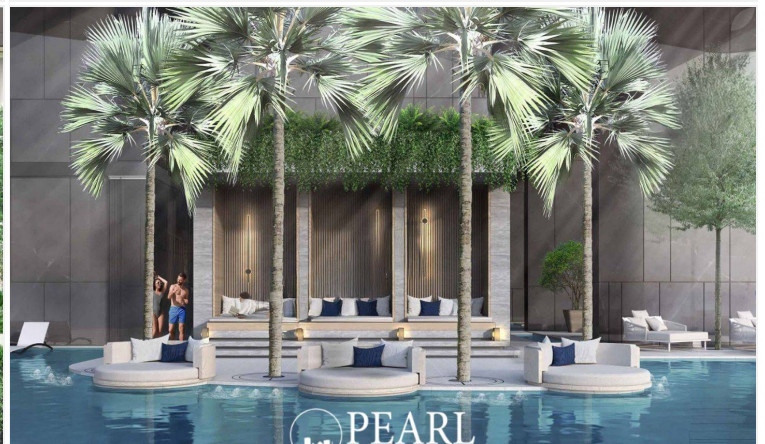
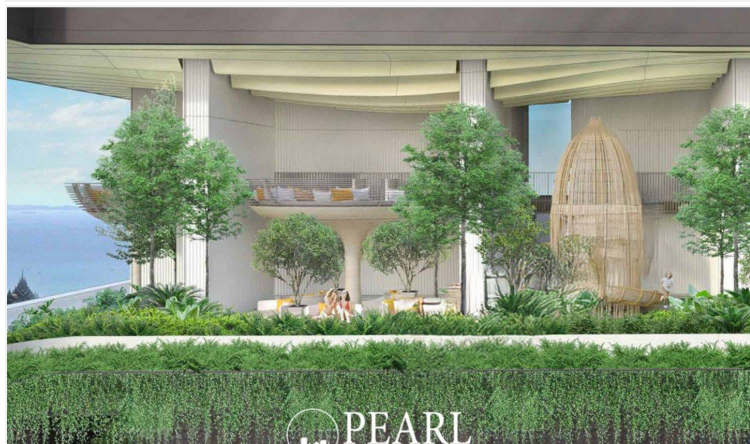
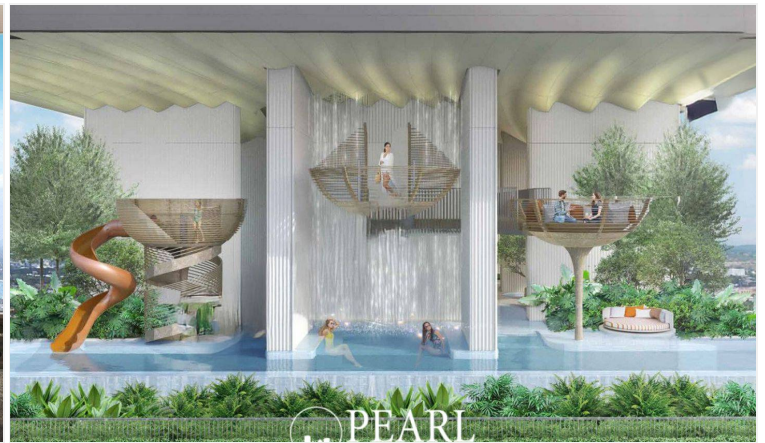
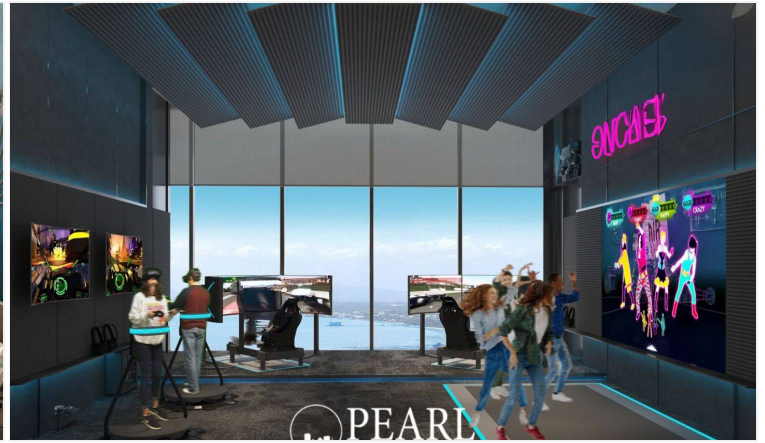
The design of Once Wongamat maximizes the stunning coastal views with floor-to-ceiling windows, while the spacious terraces allow you to enjoy the beauty of the Gulf of Thailand. With just 548 residences, you'll enjoy a serene and exclusive living environment, enhanced by 24/7 security and concierge services.

Discover Once Wongamat  
More than just a home, Once Wongamat is a lifestyle. Whether you're seeking a full-time residence, a weekend retreat, or a prestigious investment, this luxurious beachfront condominium offers it all. Explore what it means to live in the height of comfort and style.

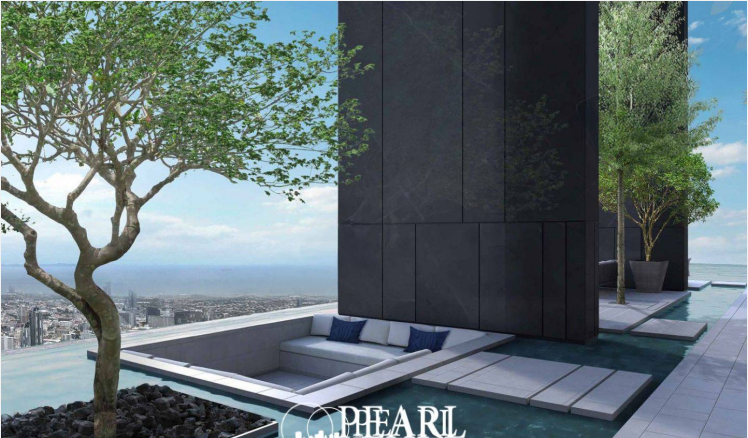
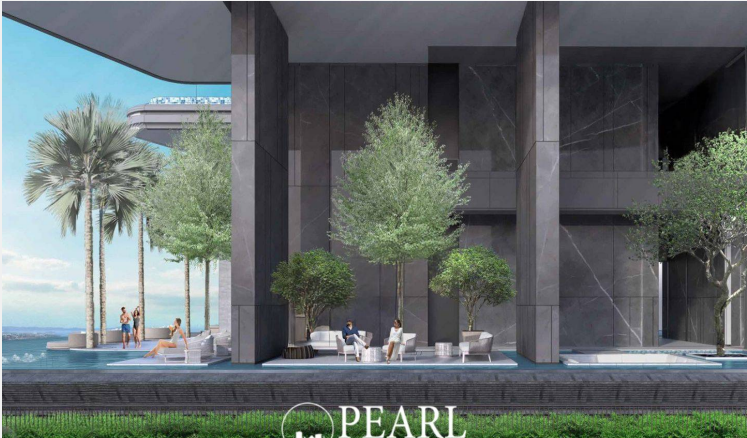
## Photo Gallery











# Property Details

---

- **Property Type:** Condo
- **Location:** Pattaya, North Pattaya, Thailand
- **Internal Area:** 34.30m<sup>2</sup>
- **Land Area:** 34m<sup>2</sup>
- **Price:** ~~฿6,175,000~~
- **Bedrooms:** 1
- **Bathrooms:** 0

# Location

---



image not found or type unknown