

# Reflection - 2 Bed 2 Bath With Sea View (10th Floor)

Pattaya, Jomtien, Thailand  
Reference: 2400

฿14,950,000



2 Bedrooms



2 Bathrooms



Condo

# Property Description

---

Pearl Property presents – A Luxury 2-Bedroom Duplex Condo at Reflection, a 5-Star Beachfront Development in Jomtien

Experience high-end living in this exceptional 2-bedroom duplex condo at Reflection Jomtien Beach Pattaya – one of the most prestigious and sought-after beachfront residences in Pattaya. This iconic development is renowned for its striking architecture, luxurious design, and world-class amenities.

Property Highlights:

Spacious 136 sqm of meticulously designed living space

Positioned on the 10th and 11th floors – offering uninterrupted sea views

Private jacuzzi on the balcony – your personal retreat in the sky

Modern interior with premium-grade materials and finishes

Full access to the development’s 5-star amenities

Whether you're seeking a luxury holiday home, a stylish permanent residence, or a high-return investment opportunity, this condo delivers on every front.

World-Class Facilities at Reflection Jomtien Beach Pattaya:

Expansive beachfront swimming pool with jacuzzi and separate children’s pool



# Pearl Property Pattaya

Fully equipped fitness center

Sauna and steam rooms

Children's playground and landscaped garden areas

Resident lounge and meeting room

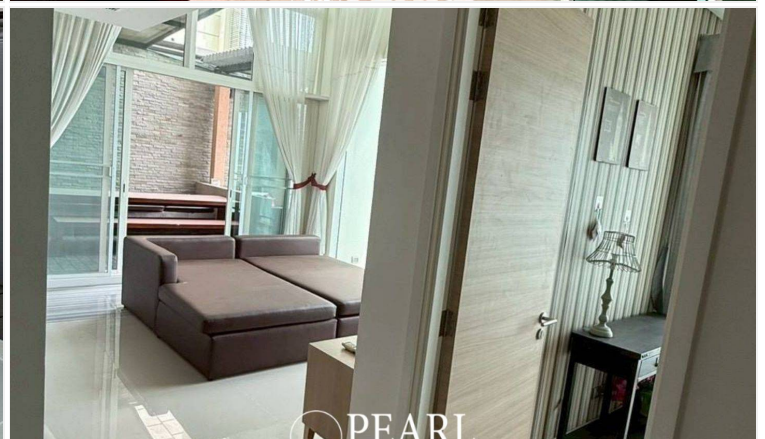
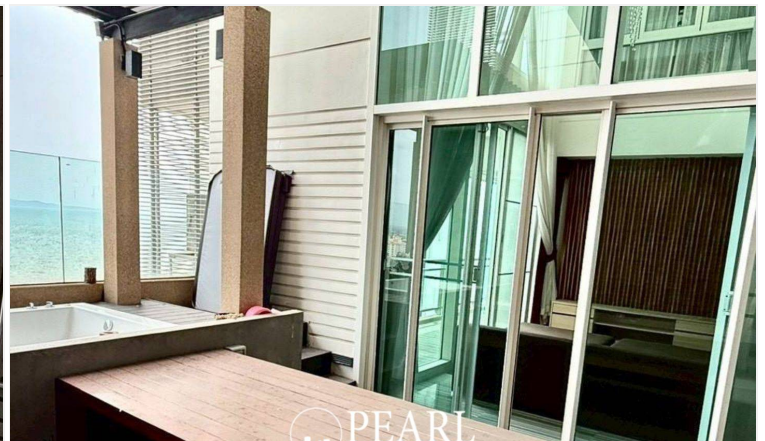
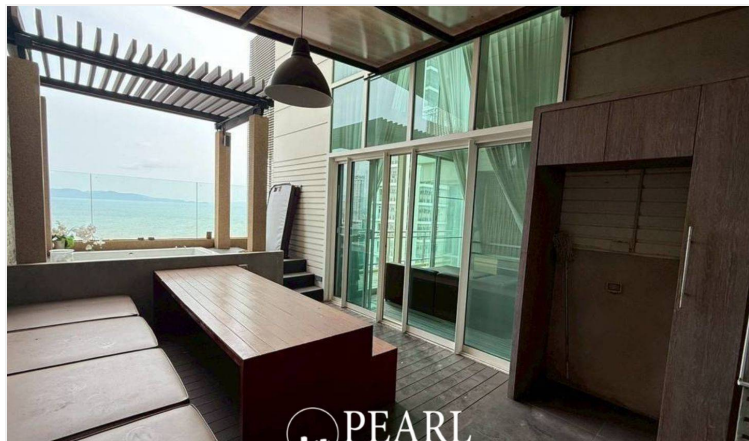
Secure indoor parking and 24-hour security

Keycard access and CCTV throughout the property

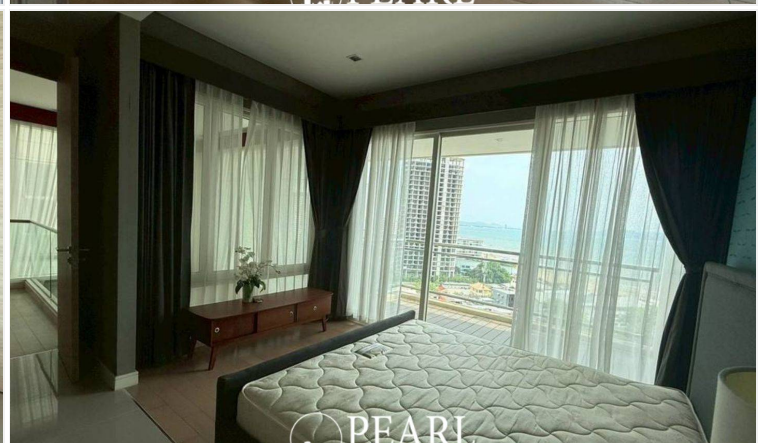
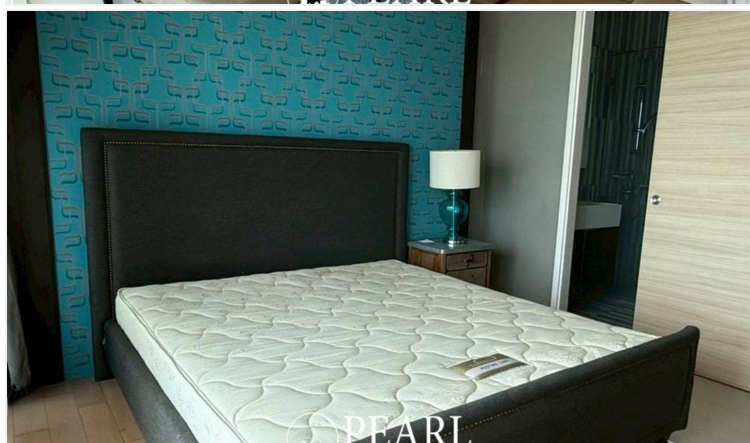
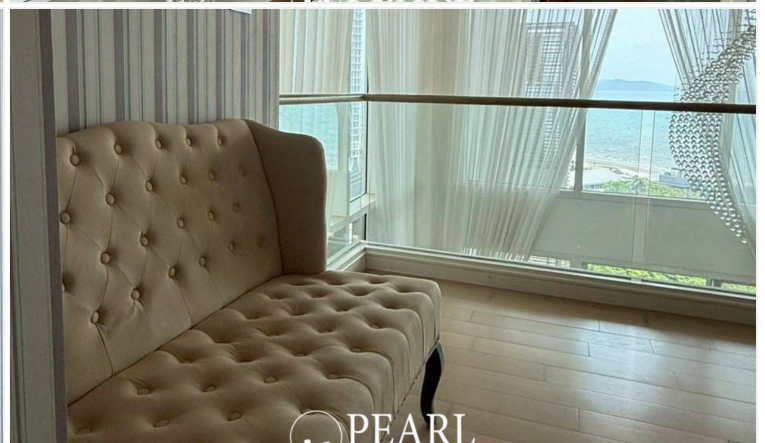
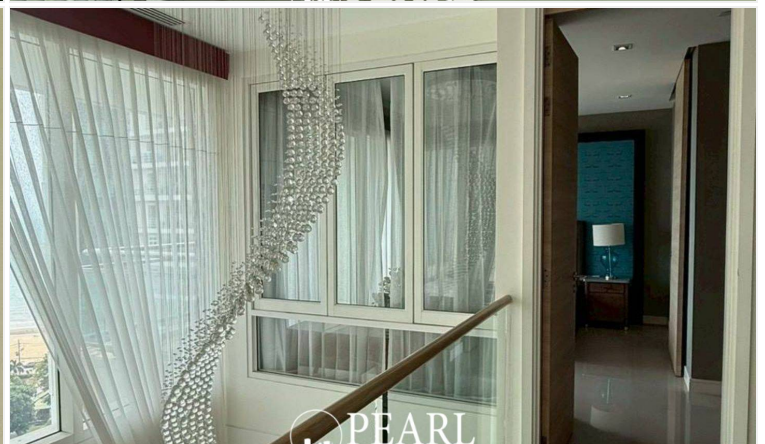
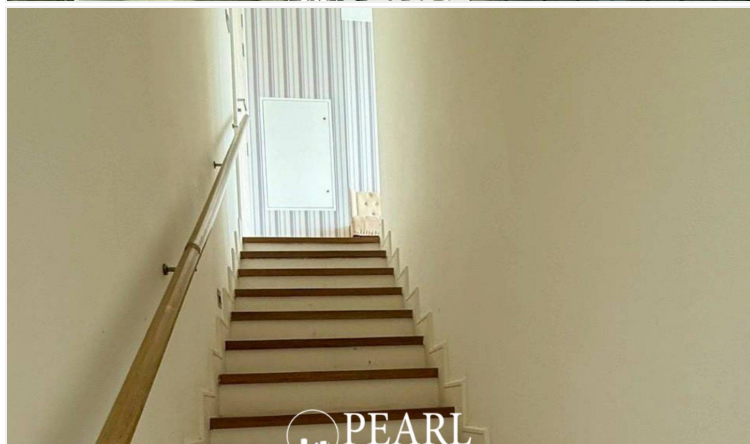
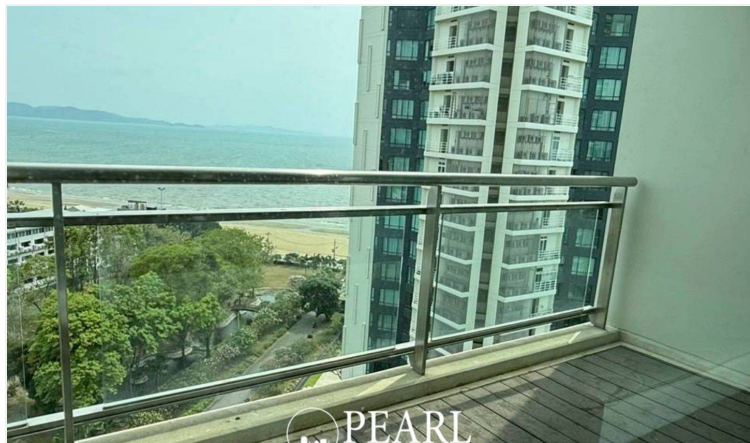
Elegant lobby with professional concierge service

## Photo Gallery

---











# Property Details

---

- **Property Type:** Condo
- **Location:** Pattaya, Jomtien, Thailand
- **Internal Area:** 136m<sup>2</sup>
- **Price:** ฿14,950,000
- **Bedrooms:** 2
- **Bathrooms:** 2

# Property Features

---

- Security
- Gym
- Jacuzzi
- Sauna
- Swimming Pool
- Tennis Court
- Air Conditioning
- Balcony
- Car Park
- Electricity
- Integral Kitchen
- Internet
- Alarm
- Children's Area
- Concierge
- Guardhouse
- Lift
- Office
- Equipped Kitchen
- Disabled Access
- Library

# Location

---

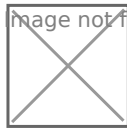


image not found or type unknown