

# Riviera Jomtien - 2 Bed 2 Bath (8th Floor)

## Corner Unit

Pattaya, Jomtien, Thailand  
Reference: 0179

฿7,990,000



2 Bedrooms



2 Bathrooms



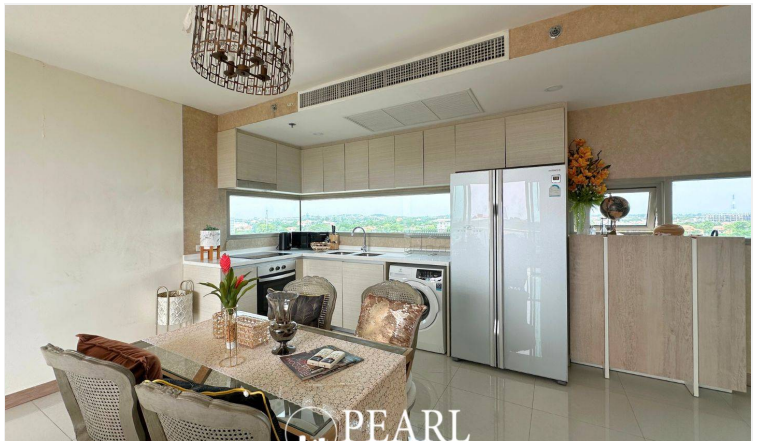
Condo



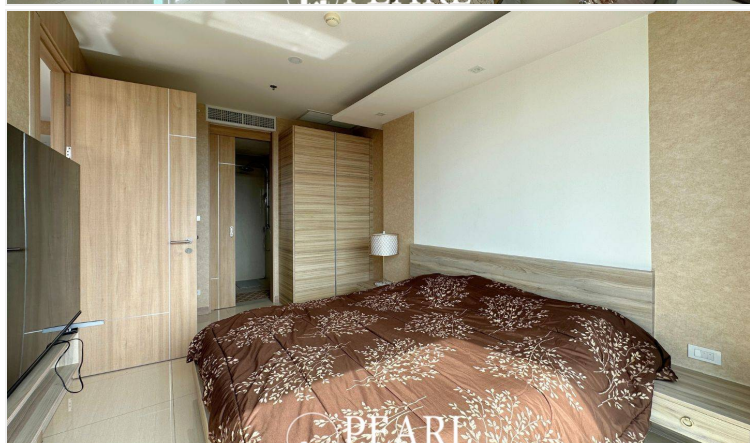
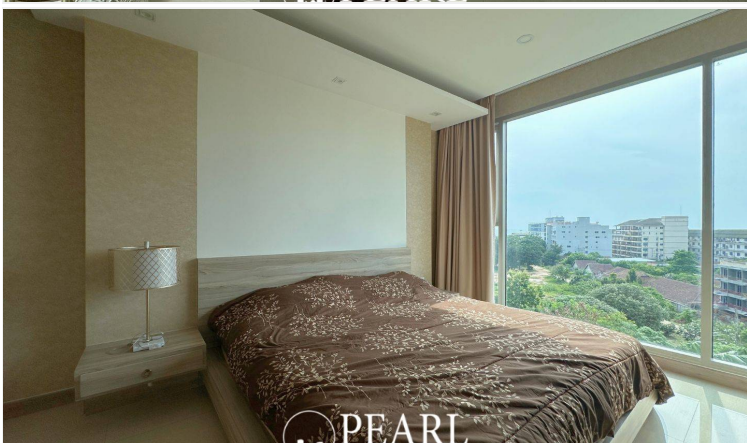
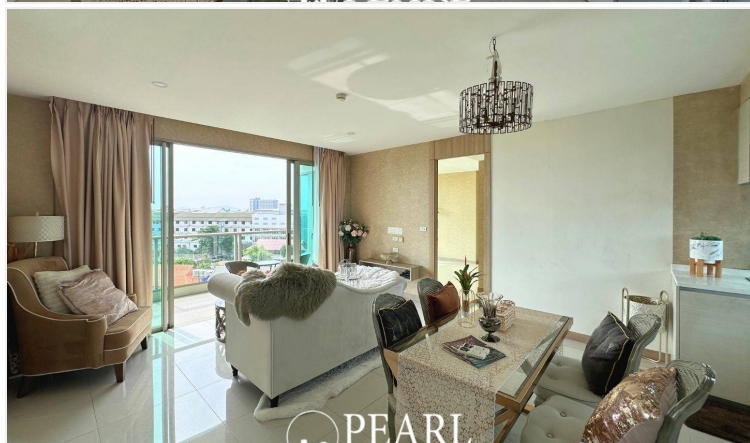
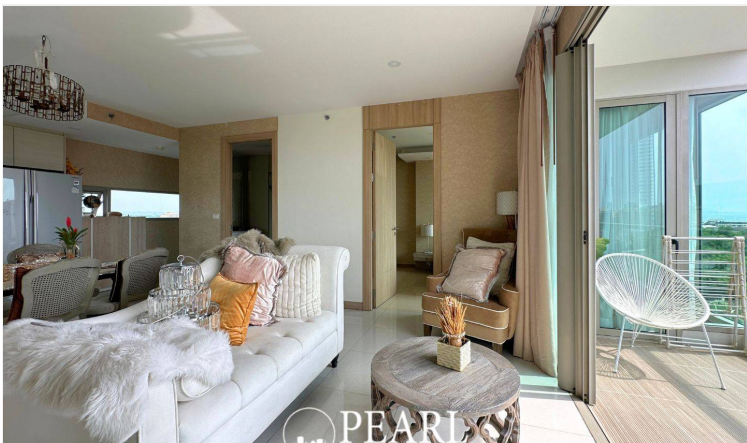
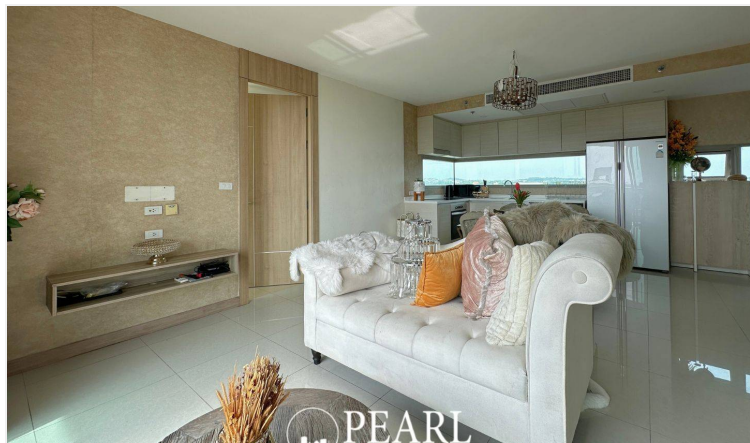
## Property Description

The new landmark of Jomtien, a luxury high-rise condominium, is designed to make a statement and stand out from the skyline whilst enjoying direct commanding views over the entire Jomtien Beach area. Conveniently located off the all-new 2nd road, enjoying excellent access to Pattaya's main Sukhumvit road. Over 80% of units feature direct sea views. The Riviera Jomtien provides the best facilities, including swimming pools, jacuzzi, clubhouse and meeting room, games room, sauna, fitness, kid's club, etc. Highlighted with sky fitness and an infinity-edge pool on the 42nd floor. This beautiful 2 bedrooms unit and 2 bathrooms unit situated on the 8th floor with sea view, offering 86 sqm. of living space. It come fully furnished, European kitchen, a dining area and living area. This unit is for sale in Thai name. Top-Notch Amenities Enjoy an infinity pool, gym, secure parking, and 24-hour security. Lush gardens offer a serene retreat. This unit is available for sale in Thai name ownership.

## Photo Gallery











# Property Details

---

- **Property Type:** Condo
- **Location:** Pattaya, Jomtien, Thailand
- **Internal Area:** 86m<sup>2</sup>
- **Price:** ฿7,990,000
- **Bedrooms:** 2
- **Bathrooms:** 2

# Property Features

---

- Security
- Gym
- Jacuzzi
- Sauna
- Swimming Pool
- Air Conditioning
- Balcony
- Car Park
- Electricity
- Integral Kitchen
- Internet
- Alarm
- Children's Area
- Concierge
- Guardhouse
- Lift
- Roof Garden
- Equipped Kitchen
- Terrace
- Disabled Access

# Location

---

image not found or type unknown

