

The Lavish - Type Aurora 4 Bed 5 Bath

Pattaya, North Pattaya, Thailand
Reference: 1335

฿19,250,000



4 Bedrooms



5 Bathrooms



Villa

Property Description

The Lavish Pattaya: A Gateway to Luxurious Living

Introduction

Welcome to The Lavish Pattaya, where luxury meets comfort in the heart of Pattaya. This exclusive house project is designed to offer residents an unparalleled living experience with its state-of-the-art amenities and beautifully crafted homes.

Location and Neighborhood

Nestled in a prime location, The Lavish Pattaya provides easy access to all that Pattaya has to offer. Located just minutes away from stunning beaches, world-class shopping centers, renowned international schools, and exquisite dining options, this project is perfect for those who crave convenience and sophistication. Enjoy the serene environment while being close to bustling city life.

Property Details

The Lavish Pattaya boasts a variety of elegant houses, each thoughtfully designed to meet the needs of modern families. The project features:

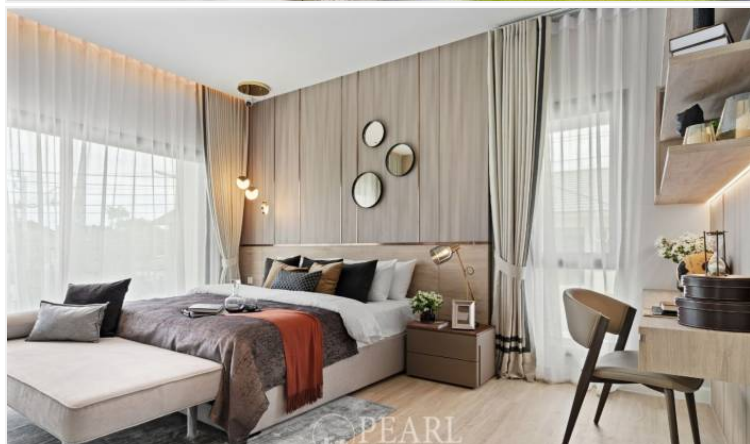
- House Types: 4-bedroom, and 5-bedroom options.
- Sizes: Spacious layouts ranging from 350 sqm to 400 sqm.
- Design: Contemporary architecture with open-plan living areas, large windows for natural light, and private gardens.

Condition and Amenities

These newly built homes are move-in ready, showcasing top-quality construction and premium finishes. Residents will enjoy a host of amenities, including:

- A pristine swimming pool
- A fully equipped fitness center
- Landscaped gardens and walking paths
- A secure children’s playground
- 24-hour security and gated entry

Photo Gallery





Property Details

- **Property Type:** Villa
- **Location:** Pattaya, North Pattaya, Thailand
- **Internal Area:** 350m²
- **Land Area:** 350m²
- **Price:** ~~฿~~**19,250,000**
- **Bedrooms:** 4
- **Bathrooms:** 5

Location



image not found or type unknown