

The Panora Estuaria - 1 Bedroom 1 Bathroom (TypeA)

Sattahip, Na Jomtien, Thailand
Reference: 5977

฿6,685,000



1 Bedrooms



1 Bathrooms



Condo

Property Description

Welcome to The Panora Estuaria - Luxury Coastal Living in Na Jomtien, Pattaya

Experience the ultimate in coastal luxury at The Panora Estuaria, an exclusive condo development nestled in the serene neighborhood of Na Jomtien, Pattaya. Offering breathtaking sea views, sophisticated design, and world-class amenities, The Panora Estuaria is the perfect blend of tranquility and convenience.

Prime Location

Located just moments from pristine beaches and surrounded by high-end dining, boutique shopping, and local attractions, The Panora Estuaria provides residents with the ideal balance of relaxation and accessibility. Enjoy easy access to Pattaya’s vibrant center, as well as nearby attractions like the Cartoon Network Amazone Waterpark and the Pattaya Floating Market.

Elegant Residences

This contemporary high-rise features a range of thoughtfully designed units, including studios, 1-bedroom, 2-bedroom, and 3-bedroom apartments. Floor-to-ceiling windows fill each home with natural light and offer stunning views of the ocean and lush surroundings.

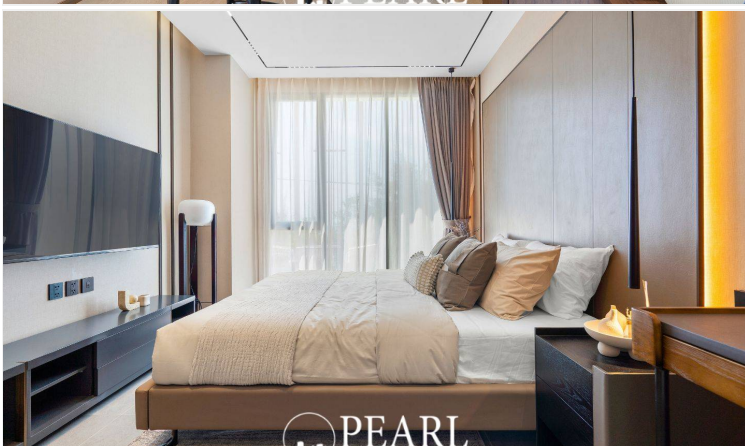
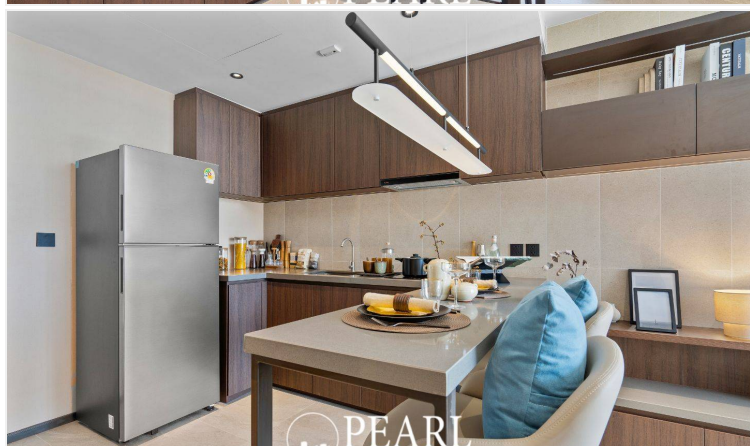
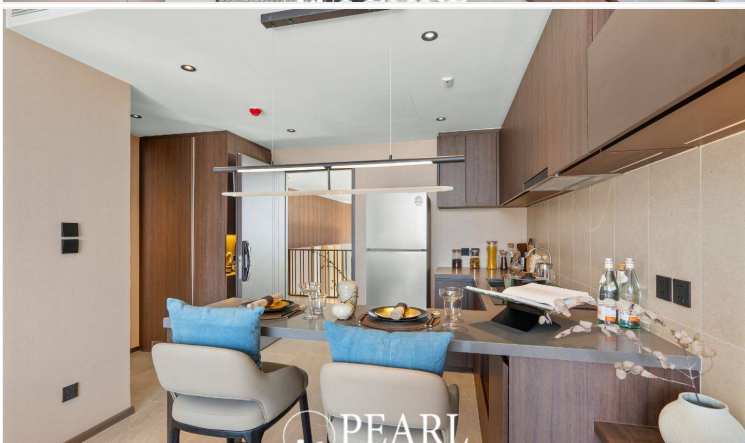
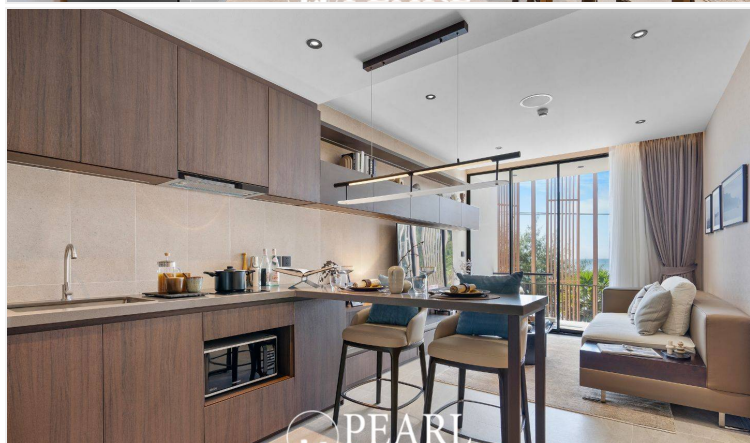
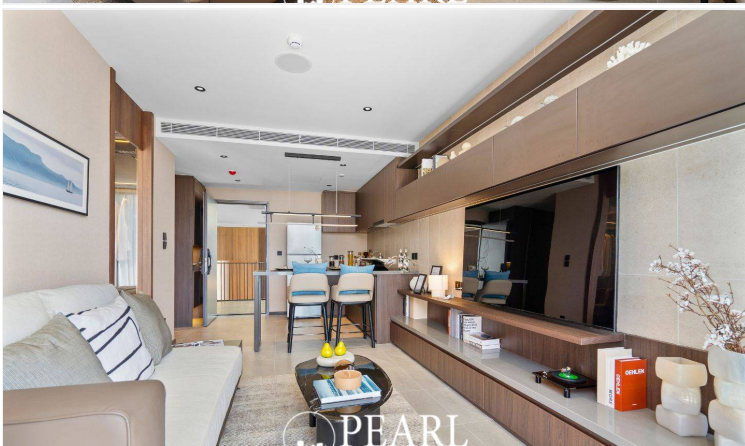
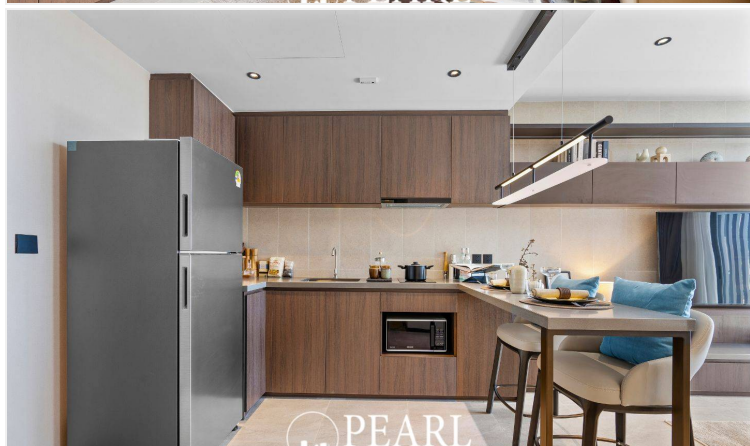
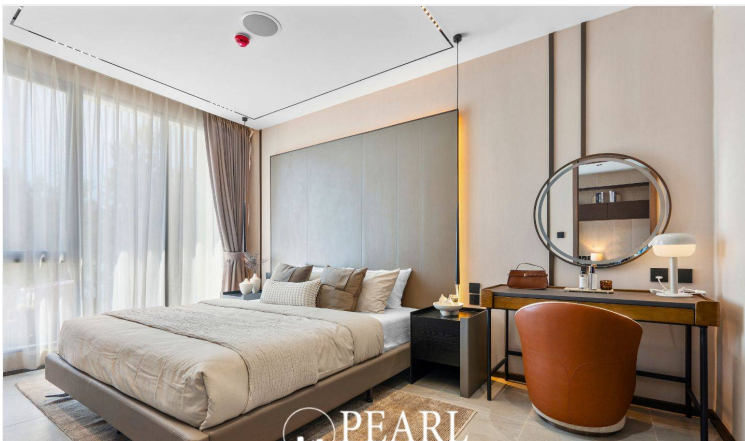
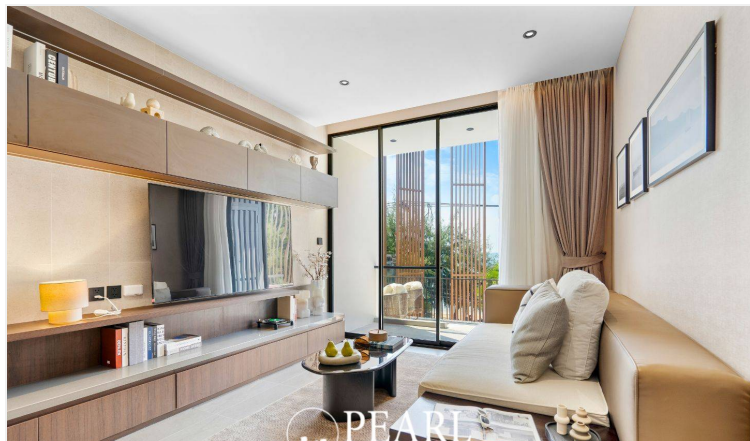
Exclusive Amenities

The Panora Estuaria offers a host of luxurious amenities, including a rooftop infinity pool, a state-of-the-art fitness center, landscaped gardens, and a children's play area. Additional features include a sauna, multi-purpose room, 24-hour security, ample parking, and high-speed elevators.

An Investment in Luxury

With competitive maintenance fees and a focus on long-term sustainability, owning a residence at The Panora Estuaria is not only an investment in luxury but also in lifestyle. Discover your perfect coastal retreat today.

Photo Gallery





Property Details

- **Property Type:** Condo
- **Location:** Sattahip, Na Jomtien, Thailand
- **Internal Area:** 47.48m²
- **Land Area:** 47m²
- **Price:** ~~฿~~**6,685,000**
- **Bedrooms:** 1
- **Bathrooms:** 1

Property Features

- Security
- Gym
- Jacuzzi
- Sauna
- Swimming Pool
- Air Conditioning
- Balcony
- Car Park
- Electricity
- Children's Area
- Lift
- Roof Garden
- Terrace
- Library

Location

image not found or type unknown

