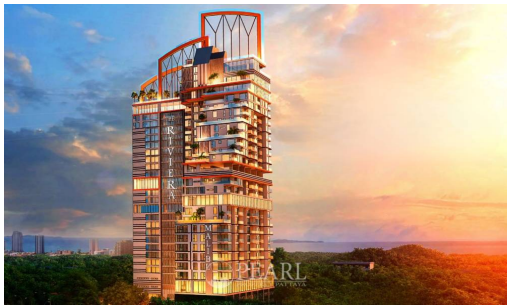


The Riviera Malibu

Pattaya, Pratamnak, Thailand
Reference: 23928

฿6,200,000



1 Bedrooms



0 Bathrooms



Condo

Property Description

Riviera Malibu Pattaya: A Blend of Luxury and Location

Introduction

Discover the epitome of luxury living at the Riviera Malibu Pattaya, a high-rise condominium project that promises an upscale lifestyle in the heart of the prestigious Pratumnak Hill area. Scheduled for completion in December 2026, this project, developed by the renowned Riviera Group, offers a unique blend of comfort, style, and top-tier amenities, setting a new benchmark in residential opulence.

Location and Neighborhood

Riviera Malibu Pattaya sits on a prime 4,300 square meter plot, approximately 850 meters from the beach, in the upmarket residential area of Pratumnak Hill. It's within walking distance to the Russian Night Market and a short drive from key city landmarks:

- Suvarnabhumi International Pattaya Bus Terminus (6 minutes by car)
- Walking Street and Royal Garden Shopping Centre (7 and 9 minutes by car, respectively)
- Pattaya Beach & Central Festival Shopping Centre (10 minutes by car)
- Pattaya International Hospital (12 minutes by car)
- Silver Lake Vineyard and Phoenix Golf & Country Club (25 minutes by car)
- U-Tapao International Airport (45 minutes by car)
- Bangkok (100 minutes by car).

Property Details

The Riviera Malibu Pattaya is an L-shaped, 30-story high-rise building housing 279 luxury apartments. The units vary in size and configuration:

- 1-bedroom units ranging from 31 to 47 square meters
- 2-bedroom units between 63 and 75 square meters
- 3-bedroom apartments of 112 and 114 square meters
- A stunning 276 square meter penthouse with 4 bedrooms, a maid's room, and a private pool.

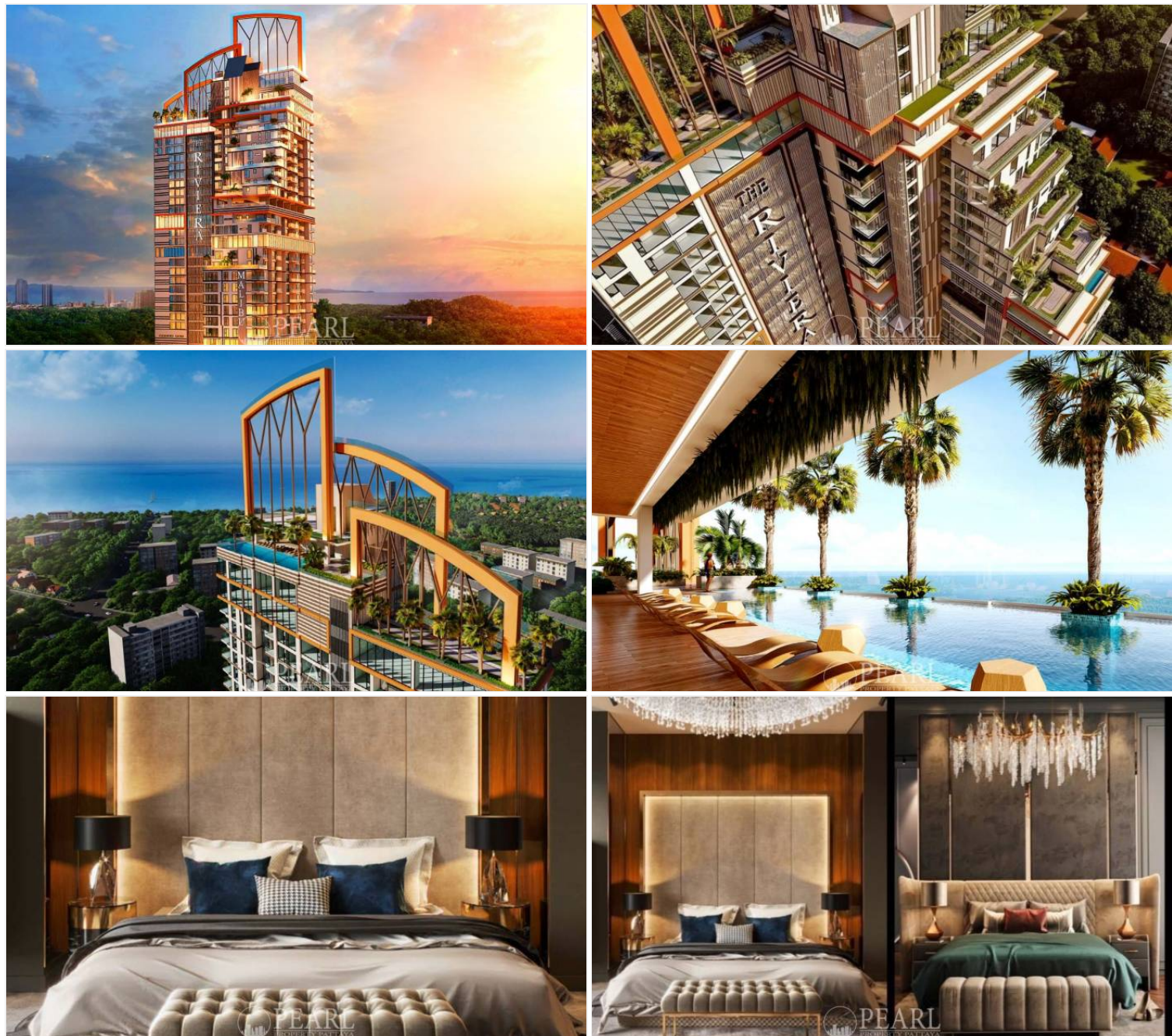
Condition and Amenities

This not-a-hotel project offers an array of hotel-like facilities, ensuring an unparalleled living experience:

- A ground-floor lobby, lounge, and reception
- Communal areas on various floors, including green spaces and lounges
- A sky pool and café bar on the 30th floor, and a sky view restaurant on the 28th floor
- A Japanese-style Onsen, dual-lane bowling alley, private cinema, and golf simulators
- An 18th-floor gymnasium and sky pool
- Comprehensive security with 24-hour surveillance and key card access

Covered car parking for 79 vehicles.

Photo Gallery







Property Details

- **Property Type:** Condo
- **Location:** Pattaya, Pratamnak, Thailand
- **Land Area:** 4300m²
- **Price:** ~~฿~~6,200,000
- **Bedrooms:** 1
- **Bathrooms:** 0

Property Features

- Security
- Gym
- Sauna
- Swimming Pool
- Air Conditioning
- Balcony
- Car Park
- Electricity
- Alarm
- Lift

Location

image not found or type unknown

