

View Point Village

Pattaya City, Thailand
Reference: 4234

฿21,900,000



3 Bedrooms



0 Bathrooms



Villa

Property Description

Pearl Property presents View Point Village – Spacious Private Villas near Jomtien Beach

Welcome to *View Point Village* (also known as *View Point Villas*), an established residential estate of luxury homes and private villas located in the highly sought-after Jomtien area of Pattaya, Chonburi. Ideal for both permanent living and holiday retreats, this community offers space, privacy, and convenience just minutes from the beach.

Completed in 2004, the project features approximately 120 homes, with 2-storey layouts ranging from 3 to 7 bedrooms and usable areas of 200–400 sqm. Each home sits on generous land plots starting from 80 sq.wah (approx. 320 sqm), with some units featuring private swimming pools.

Project Facilities:

Communal swimming pool (some villas with private pools)

Landscaped gardens and green spaces

24-hour security with CCTV surveillance

Private parking

Outdoor areas for BBQs and gatherings

Prime Jomtien Location:

Just 800 meters to Jomtien Beach

Pearl Property Pattaya

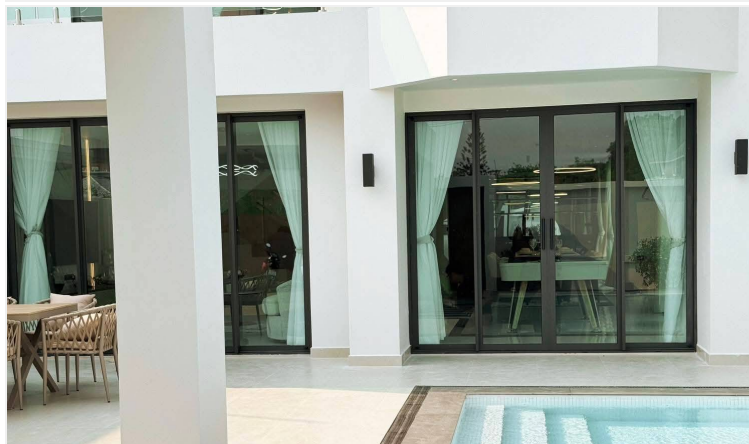
Close to Sukhumvit Road for easy city access

Nearby attractions include Pattaya Floating Market, Underwater World, and major shopping centers like Big C, Tesco Lotus, and Makro

Set in a quiet yet connected neighborhood, *View Point Village* is perfect for families, retirees, or investors seeking a spacious and well-located home in Pattaya.

Contact us today to learn more or schedule a private viewing of available villas.

Photo Gallery





Property Details

- **Property Type:** Villa
- **Location:** Pattaya City, Thailand
- **Land Area:** 99200m²
- **Price:** ~~฿~~**21,900,000**
- **Bedrooms:** 3
- **Bathrooms:** 0

Property Features

- Air Conditioning
- Car Park
- Electricity
- Equipped Kitchen
- Integral Kitchen
- Security
- Swimming Pool

Location

image not found or type unknown

